

A Fully Differential Input Voltage Amplifier

National Semiconductor
Linear Brief 20
December 1972



INTRODUCTION

The instrumentation amplifier is useful for amplifying small differential signals which may be riding on high common mode voltage levels. These amplifiers are particularly useful in amplifying signals in the milli-volt range which are supplied from a high impedance source ($> 2 \text{ k}\Omega$).

This brief will demonstrate how a low cost, high performance instrumentation amplifier can be built using the newly introduced LM3900 quad amplifier. It is also indicated how a compact transducer bridge amplifier system can be developed to take advantage of the versatility of the LM3900.

BASIC AMPLIFIER OPERATION

Figure 1 shows the basic operation of the amplifier. The bias of the LM3900 is set by the resistors R_2 and R_3 (neglecting for now, the transistors Q_1 and Q_2). Current which enters the non-inverting input of the LM3900 will be "mirrored" about V^- and then will be drawn into the inverting input terminal. This causes the current to flow through the feedback resistor, R_3 , which establishes the output voltage level. If $R_2 = R_3$ and further, if R_2 is connected to ground (0V), then the output voltage biasing level will also be exactly zero volts. It should be noticed that an *OUTPUT OFFSET CONTROL* can be implemented by supplying a reference voltage, E_R , between R_2 and ground.

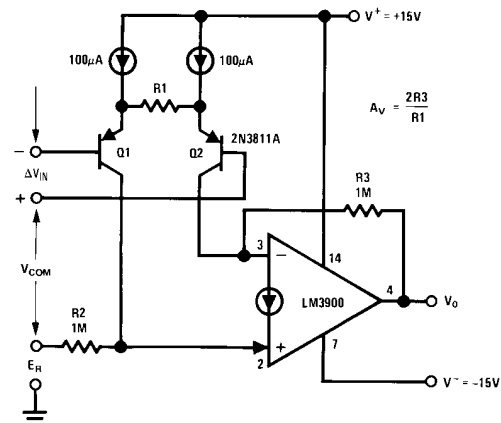


FIGURE 1. Basic Instrumentation Amplifier

Adding transistors Q_1 and Q_2 , as shown in Figure 1 will not disturb this biasing if the two collector currents of the transistors are well matched for a 0V differential input signal. The current sources which bias Q_1 and Q_2 , are chosen to be $100 \mu\text{A}$ each to guarantee high β and low offset voltage in Q_1 and Q_2 .

The gain of the amplifier is calculated as follows:

Any differential input voltage, ΔV_{IN} , appears across R_1 , and produces a current change ΔI , which is given by:

$$\Delta I = \frac{\Delta V_{IN}}{R_1} \quad (1)$$

This current change will show up in the collectors of Q_1 and Q_2 with opposite polarity. The input mirror of the LM3900 returns ΔI_{Q1} to the inverting input terminal where it is added (with sign) to ΔI_{Q2} yielding a total current change of $2\Delta I$. This current flows through the feedback resistor, R_3 , which causes an output voltage change, ΔV_o , which is given by:

$$\Delta V_o = 2\Delta I \times R_3 = 2 \times \frac{\Delta V_{IN}}{R_1} \times R_3 \quad (2)$$

to yield a gain,

$$A_v = 2 \frac{R_3}{R_1} \quad (3)$$

At this point it is convenient to evaluate the result obtained. The gain can be established by one resistor (R_1) according to equation (3). Conventional instrumentation amplifiers usually have a gain given by:

$$A_v = 1 + \frac{\text{Constant}}{R} \quad (4)$$

This means that the minimum gain of unity is obtained if R is left out ($R = \infty$). Note that this is different from the result indicated in equation (3) where unity gain is obtained for

$$R_1 = 2R_3 \quad (5)$$

and minimum gain (or maximum attenuation) is obtained if R_1 is left out ($R_1 = \infty$). This suggests that the amplifier can be turned OFF without disturbing the output voltage dc bias.

The two current sources for Q_1 and Q_2 are implemented with a dual transistor (Q_3 and Q_4) in conjunction with an additional amplifier of the LM3900 as shown in Figure 2. The operation can be easily understood if R_4 and R_5 are incorporated within the amplifier, which then takes the form of a conventional opamp closed loop regulator which maintains a reference voltage (the drop across R_6) at the emitter of Q_4 .

PERFORMANCE

The performance of the complete instrumentation amplifier of Figure 2 is outlined below (Table I and Figure 3).

TABLE I. Typical Performance Characteristics

GAIN	
Range of gain	-34 dB ($R_1 = \infty$) to 72 dB ($R_1 = 0$)
Gain is set according to:	$A_v = \frac{2R_3}{R_1}$
INPUT	
Voltage offset referred to input is adjustable to zero.	Pos supply less 2.4V
Common-mode and differential input voltage	Neg supply less 300 mV
Common-mode rejection ratio at 10 Hz	115dB (gain of 1000)
Bias current (either input)	200 nA
OUTPUT	
Output offset is adjustable to zero.	12 mV _{rms} (open loop)
Output noise	3 mV _{rms} ($A_{CL} = 66 \text{ dB}$)
FREQUENCY RESPONSE	
Small signal frequency response (-3 dB)	1 MHz (gain of 1000) 3 MHz (gain of 1)

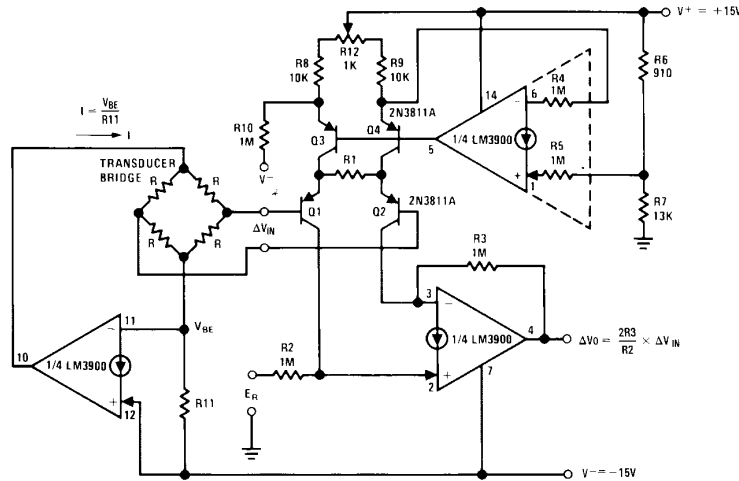


FIGURE 2. Bridge Amplifier

TL/H/8468-2

Since quantitative discussion of the sources of offset voltage is beyond the scope of this brief, only the procedure for nulling the amplifier will be included.

Letting R_1 go to zero causes the amplifier to operate in the open-loop mode. The main offset voltage source is now the V_{BE} mismatch of Q_1 and Q_2 . The output can be nulled by the *OUTPUT OFFSET CONTROL* (the reference voltage for R_2) or by adjusting the value of R_2 . With $R_1 = \infty$, the main offset voltage source is the mismatch in the collector currents of Q_3 and Q_4 . This is easily adjusted via R_{12} . These first and second adjustments interact, however, after repeating the procedure a couple of times a good result is obtained.

TRANSDUCER BIAS SOURCE

Having in mind that the LM3900 consists of four independent amplifiers makes it relatively easy to bias a transducer bridge with a constant current source using only one more of the amplifiers and one resistor. The technique is self-explanatory and is also shown in *Figure 2*.

CONCLUSION

A brief review of a new concept for an instrumentation amplifier has been presented. Many applications can be de-

rived from this basic connection which require amplifying the low level differential signals which are obtained from sensors such as strain gages, pressure transducers, and thermocouples. The performance of this instrumentation amplifier is adequate for many system applications. (See National Semiconductor Application Note 72, "The LM3900 — A New Current-Differencing Quad of \pm Input Amplifiers" for further information.)

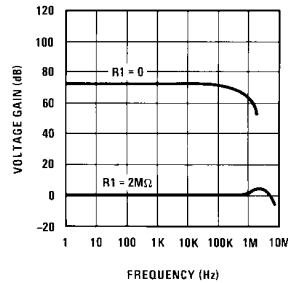


FIGURE 3. Frequency Response

TL/H/8468-3

LIFE SUPPORT POLICY

NATIONAL'S PRODUCTS ARE NOT AUTHORIZED FOR USE AS CRITICAL COMPONENTS IN LIFE SUPPORT DEVICES OR SYSTEMS WITHOUT THE EXPRESS WRITTEN APPROVAL OF THE PRESIDENT OF NATIONAL SEMICONDUCTOR CORPORATION. As used herein:

1. Life support devices or systems are devices or systems which, (a) are intended for surgical implant into the body, or (b) support or sustain life, and whose failure to perform, when properly used in accordance with instructions for use provided in the labeling, can be reasonably expected to result in a significant injury to the user.
2. A critical component is any component of a life support device or system whose failure to perform can be reasonably expected to cause the failure of the life support device or system, or to affect its safety or effectiveness.

<p>National Semiconductor Corporation 1111 West Bardin Road Arlington, TX 76017 Tel: (800) 272-9959 Fax: (800) 737-7018</p>	<p>National Semiconductor Europe</p> <p>Fax: (+49) 0-180-530 85 86 Email: cnjwge@tevm2.nsc.com Deutsch Tel: (+49) 0-180-530 85 85 English Tel: (+49) 0-180-532 78 32 Français Tel: (+49) 0-180-532 93 58 Italiano Tel: (+49) 0-180-534 16 80</p>	<p>National Semiconductor Hong Kong Ltd. 19th Floor, Straight Block, Ocean Centre, 5 Canton Rd. Tsimshatsui, Kowloon Hong Kong Tel: (852) 2737-1600 Fax: (852) 2736-9960</p>	<p>National Semiconductor Japan Ltd. Tel: 81-043-299-2309 Fax: 81-043-299-2408</p>
--	---	---	---

National does not assume any responsibility for use of any circuitry described, no circuit patent licenses are implied and National reserves the right at any time without notice to change said circuitry and specifications.